



PROSPECTOR™

Features

- Includes Server with RAID for high speed data storage
- Web-browser client interface
- Imports Chapter 10 or HFS files
- Allows time sliced exports of archived data
- Select single or multiple parameters for export
- Exports raw or processed data
- Provides 'snapshot' view of the data parameter
- Correlate data parameters with TSPI information
- Export video data from Chapter 10 files
- Output Data Re-sequencing
- Enhanced Flight Data History
- Trigger Export on Logical Conditions
- User Controlled Sample Rate
- User Defined Time Slices (IRIG Time)
- Import/Export Parameter Overlay
- Ability to Save/Load batch to user disk drive

Prospector™ is a web browser application allowing users to quickly and easily import data files into a centralized data storage location, then visualize and export that data for use in post-test data analysis. Prospector™ is a multi-user, multi-threaded, platform independent software application providing the following capabilities:

- Imports and merges data from a variety of sources
- Supports IRIG Chapter 10, TSPI, and L-3 HFS source files
- Time-orders, sorts and processes data during the import process
- Web browser interface for client users
- Extracts data on demand through web page interface
- Exports raw and/or processed data to multiple users

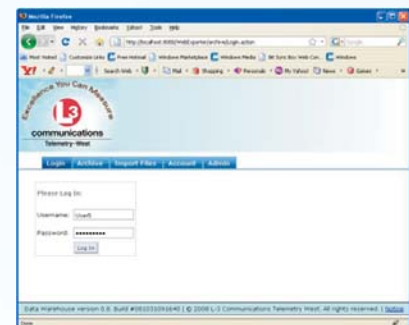
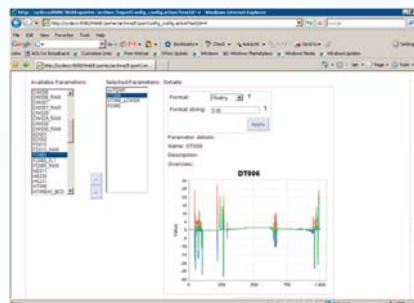
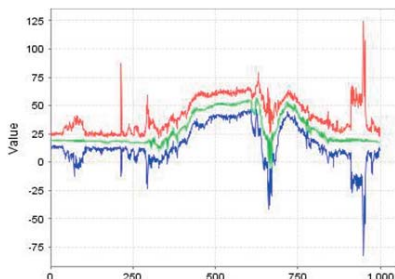
Prospector™ includes privilege based management capabilities providing the ability to:

- Manage user accounts and roles
- Import/process/delete/export data files
- Export data files in CSV, TSV, & Matlab data types

Prospector™ supports processing L-3 HFS data or Chapter 10 data, and can be tailored for custom file types. HFS data files are produced by the 550 on the front end storage array, and can be transferred to Prospector™ using the Vista archiving GUI. After transfer, data from the HFS files can be imported into Prospector and made available for user export.

Chapter 10 data files are downloaded to Prospector™ from a ground data recorder using standard file controls such as Windows Explorer. A downloaded Chapter 10 file can be imported directly by Prospector™, and either pre-processed to produce EU data from the raw data in the Chapter 10 file, or merged with Time and Space Positioning Information (TSPI) data and then imported.

Prospector™ provides the ability for users to request and receive recorded data at web enabled client computers. To request data, a user selects the desired data file, time slice, parameters to output and the output format (CSV, TSV, MATLAB). The exported data file is then written to the selected file name and folder on the client computer or stored in the Prospector™ storage repository location.



Telemetry-West

POST-TEST DATA MINING & ANALYSIS

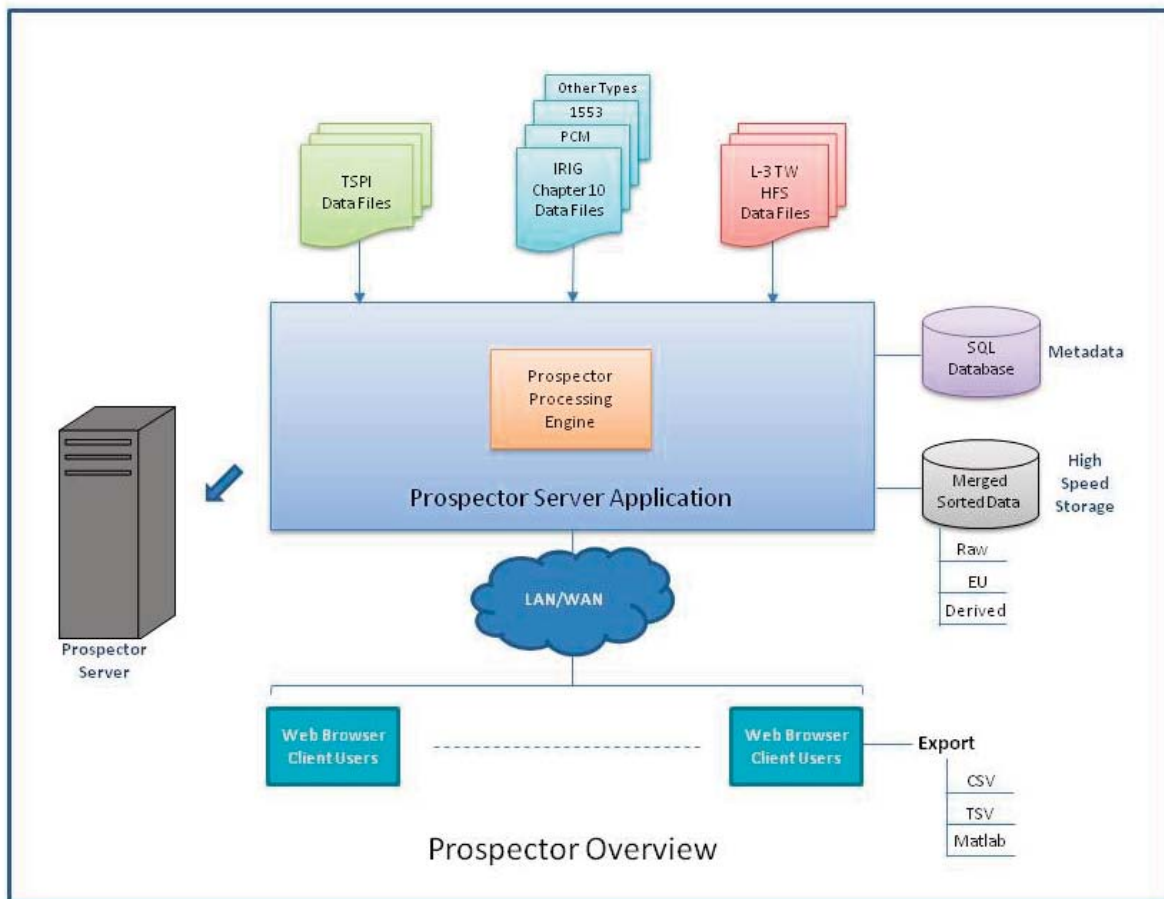
PROSPECTOR™

Compatibility

Operating SystemMicrosoft Windows 2003
Microsoft Windows XP
Web BrowserMicrosoft Internet Explorer
Mozilla Firefox

Ordering Information

PRO-5Prospector Data Mining Software for up to 5 Users,
Includes Base Server
PRO-10Prospector Data Mining Software for up to 10
Users, Includes Intermediate Server
PRO-25Prospector Data Mining Software for up to 25
Users, Includes Enhanced Server



Telemetry-West

9020 Balboa Avenue
San Diego, CA 92123-3507
858.694.7500 800.351.8483
Fax: 858.279.0693
www.L-3Com.com/TW



Telemetry & RF Products